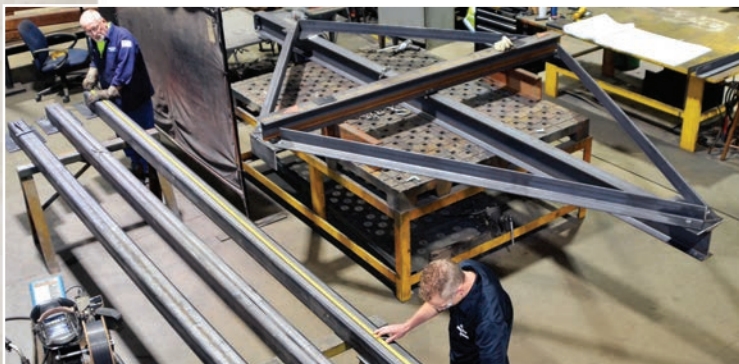




Water & Wastewater Services

PROJECT PROFILE

Pump Station Monorail Fabrication



**Blooming
Glen
Contractors
Inc.**
WATER & WASTEWATER
SERVICES DIVISION
EOE Including Disability & Vet



P.O. Box 55, Skippack, PA 19474

Phone: 215.258.7530
Fax: 215.257.7761
Email: info@bgcwws.com
Web: bgcwws.com

Consulting: lucky@bgcwws.com
Service: mmilewski@bgcwws.com
Estimating: cpurdy@bgcwws.com
Engineering: jmoses@bgcwws.com
Metals
Fabrication: metals@bgcontractors.com



Project:

Sanatoga Greene

Location:

Pottstown, PA

Client:

Sanatoga Greene
243 Evergreen Road
Pottstown, PA 19464

Design Engineer:

In-House Mechanical Engineering
and Design Management
P.O. Box 55
Skippack, PA 19474

Divisions Utilized:

BGC, Inc., Water & Wastewater Services Division
H&K Group, Inc., Media Blasting & Industrial
Coatings

Project Information:

Within our fabrication facility we took this project from prints to the completed structure.

This was then transported to our in-house paint shop for proper industrial coatings.

Final transportation to job site for installation.



Water & Wastewater Services

The BGC, Inc., Water & Wastewater Services Division Team is dedicated to providing superior quality, efficiency and timely performance to all of our clientele; serving the water and wastewater needs of the municipal, industrial, agricultural and institutional sectors.

Services Include:



- Start-Up Services
- Field Inspections
- Troubleshooting
- Preventative Maintenance & Repair
- Predictive Maintenance
- Motor Assessment
- Thermal Imagery
- Vibration Analysis
- Laser Alignment
- Vertical Pump Alignment
- Annual Service Contracts

- Pump Rehabilitation
- Mechanical Piping & Repairs
- Turnkey In-house Metal Fabrication Services
- 3D Scanning & Facilities Modeling
- In-house Mechanical Engineering Services
- In-house Media Blasting & Industrial Coatings

- Pump Stations
- Valve Vaults
- Meter Pits
- Package Plants

- Clarifiers & Drives
- Aeration Equipment
- Oxidation Equipment
- Grit Equipment
- Sludge Dewatering
- Digesters

- Site Development & Utilities
- Paving & Concrete
- Manhole Supply

- AWS Certified
- ASME Certified
- Alloys (Steel, Stainless Steel, Aluminum)
- On-Site Field Services
- 50,000 Sq. Ft. Fabrication Shop
- 3D Scanning and Modeling Capabilities
- On Staff CWI
- CNC Pipe and Tube Plasma Cutting
- Plasma Rotary Pipe Cutting

CONTACT US

Contact us today to talk about:

- New Construction
- Plant Upgrades
- Preventative & Emergency Maintenance
- Welding & Fabrication Services

Fully Bonded & Insured, OSHA Trained & Certified, Complete Turn Key Services

- SAME DAY EMERGENCY RESPONSE SERVICES
- Available 24/7/365
- Water Main & Valve Repair
- Sewage Force Main Repair
- ONE CALL AND WE'RE THERE!
- 844.802.4050



MUNICIPAL • INDUSTRIAL • AGRICULTURAL • INSTITUTIONAL